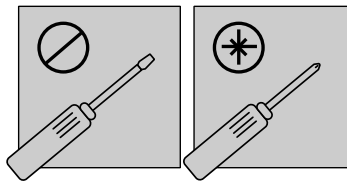
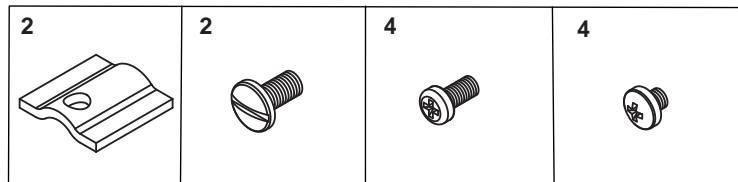
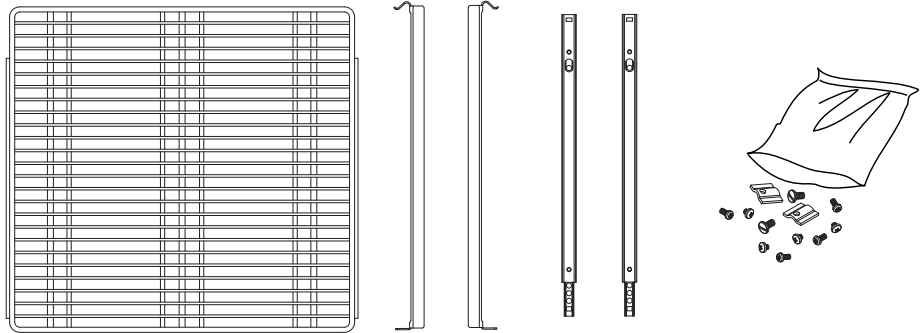
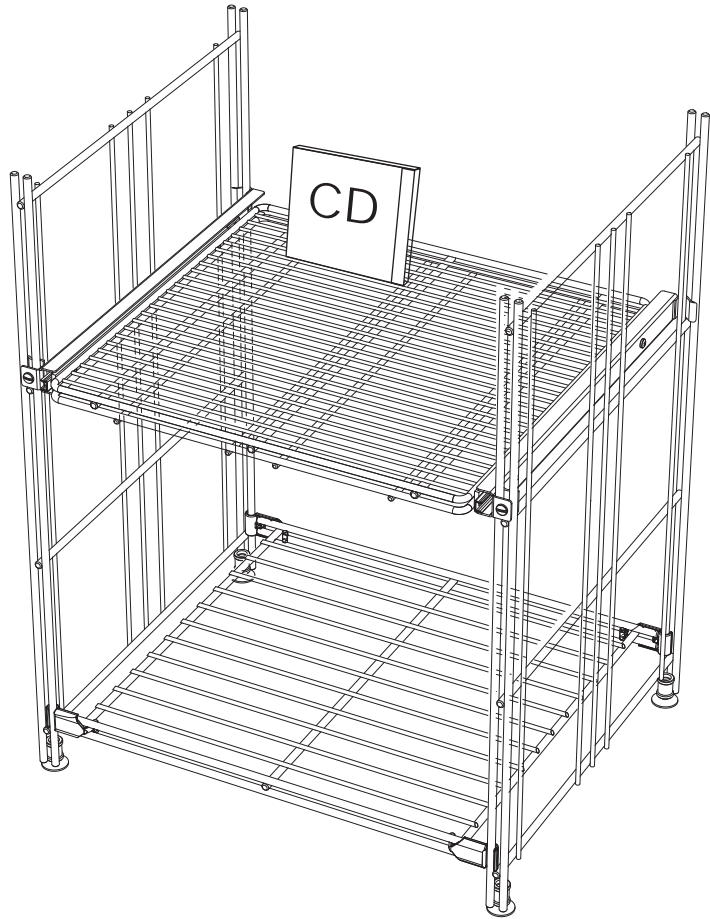


BALTON®


B III

370 300
370 310
370 320



 Antes del montaje


Lea cuidadosamente las instrucciones antes de empezar el montaje. Controle el contenido del embalaje. Póngase en contacto con su distribuidor si encuentra algo deficiente o que las herramientas están disponibles. Efectue el montaje paso a paso según el manual.

 Vor der Montage

Lesen Sie bitte als erstes die Montageanleitung sorgfältig durch. Überprüfen Sie den Verpackungsinhalt. Falls Teile fehlen oder defekt sind, setzen Sie sich bitte mit Ihrem Fachhändler in Verbindung. Achten Sie darauf, dass die schraffiert dargestellten Werkzeuge bereitliegen. Die Montage erfolgt schrittweise gemäß Anleitung.

 Before assembly

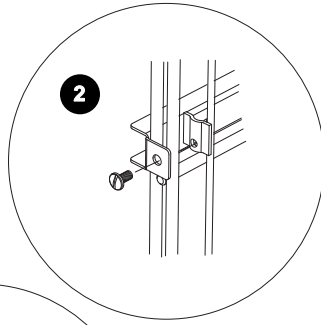
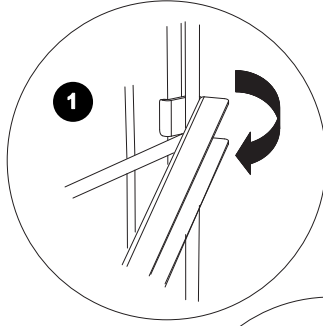
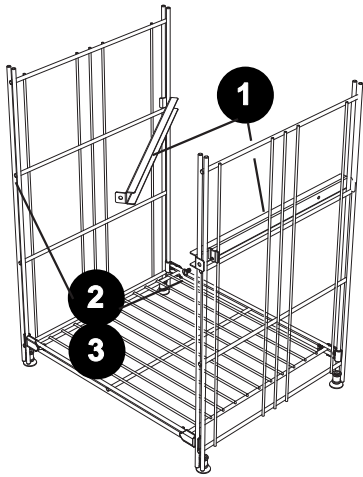
Read through the instructions carefully before starting assembly. Check the contents of the package. Contact the point of sale if you find anything defective or missing. Make sure that the shaded tools are available. Assemble step by step as shown in the instructions.

 Avant le Montage

Lisez attentivement les instructions avant de commencer les travaux de montage. Contrôlez le contenu de l'emballage. En cas de pièces endommagées ou manquantes, contactez le point de vente. Assurez-vous que les outils nécessaires sont disponibles. Effectuez le montage étape par étape suivant les instructions.

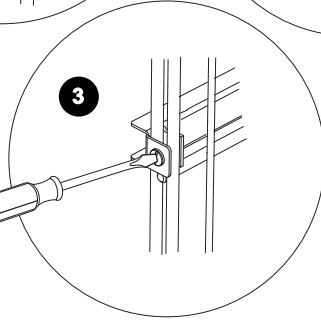
info@balton.se

A

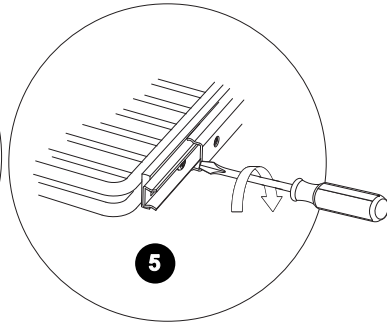
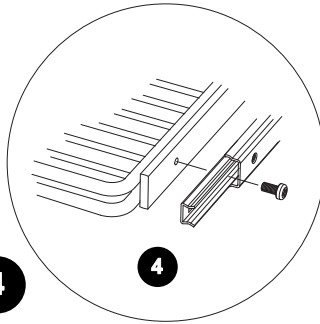
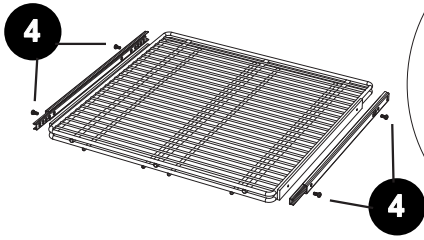


2

X2	X2

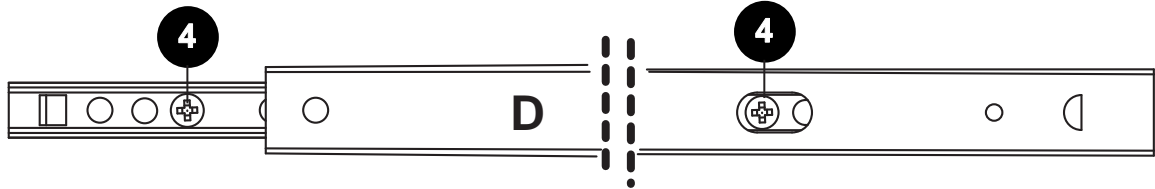


B

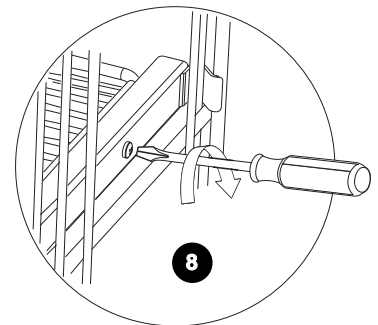
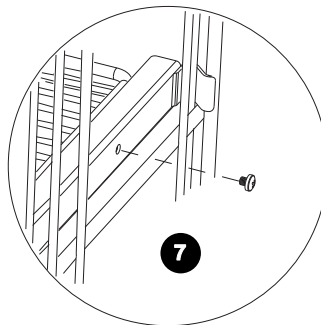
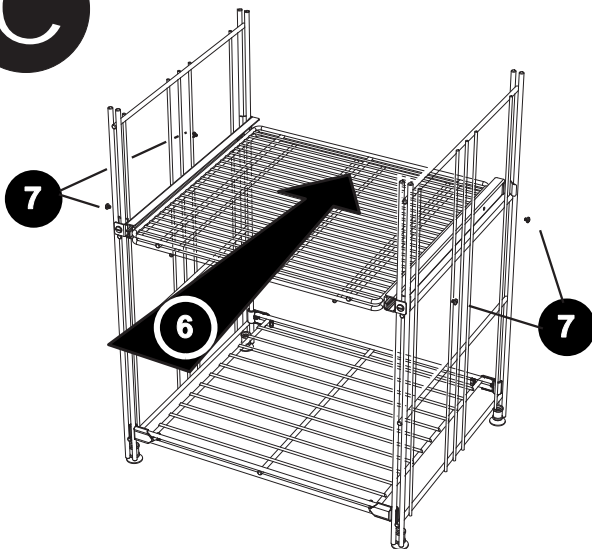


4

X4



C



7

X4